



IOF Structure

Agenda

- Who or what is the IOF?
- IOF structure
 - Council
 - Commissions, etc
 - IOF Office

Goal of the session: to understand the IOF structure

Who or what is IOF?

Name, Role and Constitution

- The IOF is made up of the national orienteering federations which have been admitted to membership
- Amongst its members, the IOF is the supreme authority on all matters relating to international orienteering
- The IOF is recognised by the International Olympic Committee (IOC)
- The IOF was formed on 21 May 1961 at a Congress held in Copenhagen, Denmark.
- The 10 founding members were Bulgaria, Czechoslovakia, Denmark, Federal Republic of Germany, Finland, German Democratic Republic, Hungary, Norway, Sweden, and Switzerland.
- The IOF is now registered in Sweden

Who or what is IOF?

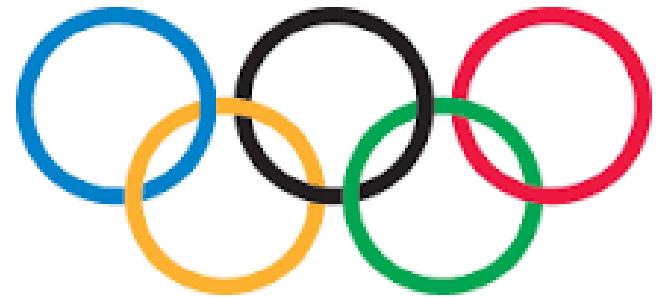
Vision

Orienteering is recognised as a truly global sport, attractive to all, having presence and credibility on the world sporting stage, included in the Olympic Summer and Winter Games.

Who or what is IOF?

Aims

- To spread orienteering and to promote its development
- To conform with and to respect the Olympic Charter
- To create and maintain a world event programme



Who or what is IOF?

Tasks

- To commission and supervise World Championships in recognised disciplines of orienteering
- To commission and supervise other IOF international competitions
- To draw up universal rules and guidelines for orienteering and to supervise their proper application
- To maintain cordial relation with other international sports organisation and to represent the interests of orienteering in its dealing with these

Who or what is IOF?

Members

- The IOF now recognises just one class of member
 - 70 federations (status November 2016)
 - 5 of those are Provisional members
- Rights of full members
 - Active participation in IOF general assembly
 - Participation in IOF events
 - Organisation of IOF major events
- Provisional membership status may only be held for a limited period. The rights of a provisional member are the same as those of a member except that a provisional member may not vote at the General Assembly, nor nominate candidates to Council.
- Membership fees depend on the financial strength of the country

IOF Regions

- Africa (CMR, EGY, MOZ, RSA, UGA – 5 Federations)
- Asia (CHN, HKG, INA, IND, IRI, JPN, KAZ, KGZ, KOR, MAS, NEP, PRK, TPE -13 Federations)
- Europe (AUT, AZE, BEL, BLR, BUL, CRO, CZE, CYP, DEN, ESP, EST, FIN, FRA, GBR, GEO, GER, HUN, IRL, ISR, ITA, LAT, LIE, LTU, MDA, MKD, MNE, NED, NOR, POL, POR, ROU, RUS, SRB, SLO, SUI, SVK, SWE, TUR, UKR - 39 Federations)
- North America (BAR, CAN, CUB, DOM, USA – 5 Federations)
- Oceania (AUS, NZL – 2 Federations)
- South America (ARG, BRA, CHI, COL, ECU, URU – 6 Federations)

IOF Structure

- General Assembly
 - Supreme IOF organisation
 - Meets biennially ▶ 2002 Fontainebleau (FRA), 2004 Västerås (SWE), 2006 Aarhus (DEN), 2008 Olomouc (CZE), 2010 Trondheim (NOR), 2012 Lausanne (SUI), 2014 Trentino (ITA), 2016 Stromsöd (SWE)
 - Agenda prescribed in the IOF statutes
- Council
- Discipline committees
- Support commissions
- IOF Office
- Presidents' conference
 - Meets biennially ▶ 2001 Tampere (FIN), 2003 Rapperswil (SUI), 2005 Aichi (JPN), 2007 Kiev (UKR), 2009 Miskolc (HUN), 2011 Annecy (FRA), 2013 Vuokatti (FIN), 2015 Inverness (GBR)
 - No formal decision-making power but an information/discussion platform

IOF Council

- The IOF Council shall lead the IOF between General Assemblies
- Members are elected by the IOF General Assembly
 - President
 - Senior vice president
 - 2 further vice presidents
 - Total 11 members
- Election period 2 years
- Political and strategic lead of IOF
 - All decisions must be published by Council
 - Commissions can only propose/recommend to Council



Discipline Commissions

FootO, SkiO, TrailO, MTBO

- Members are appointed by Council
- Period 2 years
- Commissions are responsible for the development of their discipline
 - To commission and supervise World Championships and other IOF international competitions
 - Recommending appointment of Senior Event Advisors
 - To draw up guidelines for organisers, advisers, applicants, etc
 - To co-operate with the Rules Commission in preparing rules
 - Clinics, training, organisation of contacts

MTBO Commission

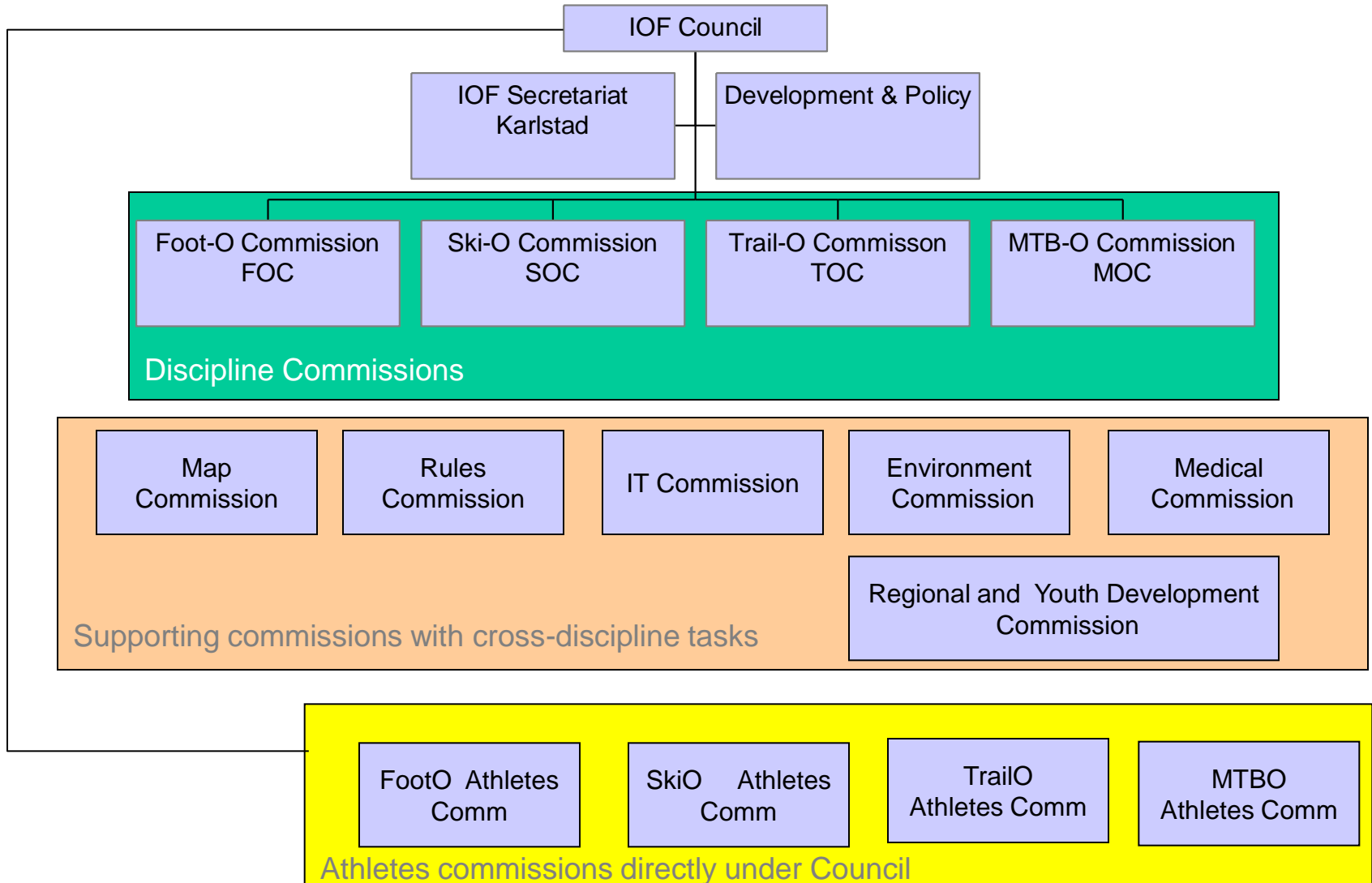
- Chairman: Ursula Hausermann SUI
- Members:
 - Thomas Wieser AUT
 - Jiri Putik CZE
 - Helene Ediar FRA
 - Timo Laurila FIN
 - Keith Dawson GBR
 - Ludomir Parfianowicz, POL
 - Carlos Simoes POR
 - Magnus Wallenborg SWE

Interdisciplinary Commissions

Map, Rules, Environment, ITC

- Map Commission (MC) Chair Håvard Tveite (NOR)
 - All map related issues
- Rules Commission (RC) Chair David Rosen (GBR)
 - IOF competition rules, special rules, harmonisation across all disciplines
 - Basic education of IOF event advisors
 - Licencing of EAs
 - Approval of Punching Systems
- Environmental Commission (EC) Chair Eje Andersson (SWE)
 - Support for and co-ordination among respective bodies in IOF federations
- IT Commission (ITC) Chair Håkan Blomgren (SWE)
 - Timing, electronic punching, web-casting projects
- Medical Commission Chair Olli Heinonen (FIN)
 - Anti-doping related matters

IOF Organisation



IOF Office



- CEO and Secretary General: Tom Hollowell
- Sports Administrator: David Wästlund
- Global Development & Communications Officer: Malin Fuhr
- Office Administrator and Anti-Doping Officer: Kirsty McIntyre
- Marketing Manager (50%): Hans Jørgen Kvåle
- IOF WOC SEA: Jørn Sundby
- IOF Eventor support: Henrik Skoglund



IOF Office

- Legal location of IOF is now Sweden
- The IOF Office is located in Karlstad, Sweden
- Support for Council, Commissions and SEAs
- IOF finances and controlling
- Connecting link with IOF member federations
- Relations with other international sports organisation

- www.orienteing.org